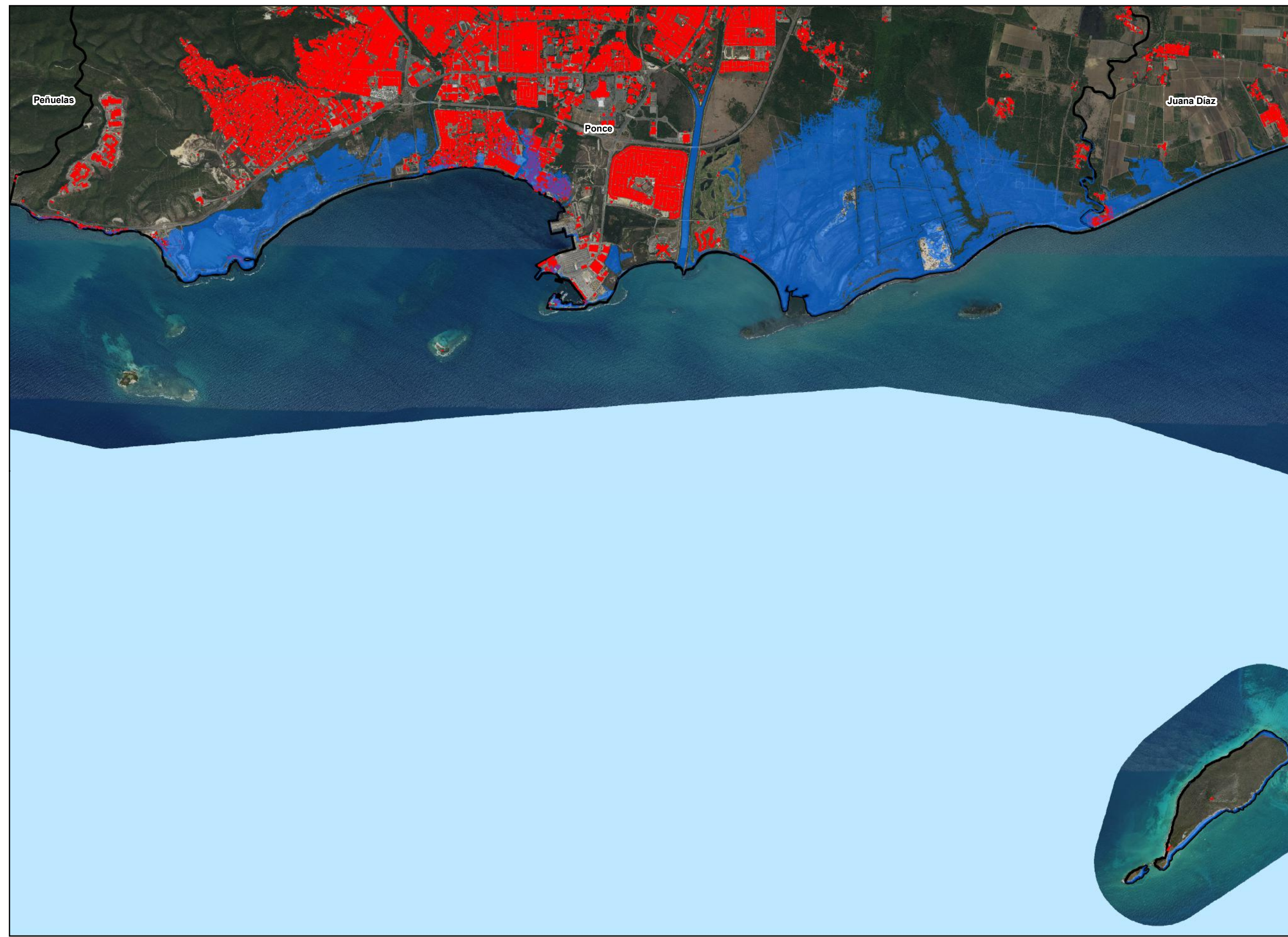


# Southern Economic Development District: Ponce

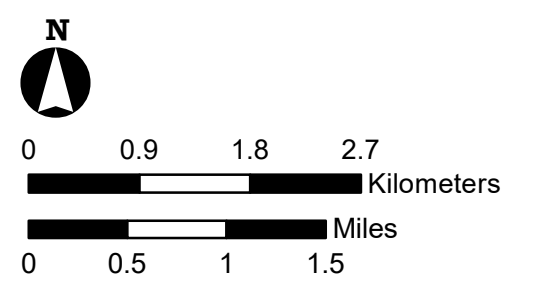
Puerto Rico Joint Recovery Office



**Map Description:**  
This map displays the areas that will be affected if the sea level rises 4ft. in the Southern Economic Development District.

- Legend:**
- Sea Level Rise 4ft
  - Building Footprint
  - Municipalities

**Note:**  
4.6% of the area in the Municipality of Ponce will be affected if there is a sea level rise of 4ft.



**Data Sources:**  
FEMA, ESRI, NOAA